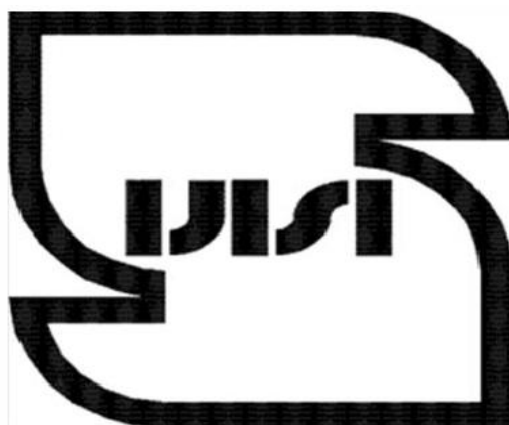


Institute of Standards and Industrial Research of Iran



**Islamic Republic of Iran
Presidency
Institute of Standards and Industrial Research of Iran**



Deputy of Quality Assessment

Manual Style

Issuing Ratification License for Type-Approval and COC of Imported Automobiles

November 2018

Institute of Standards and Industrial Research of Iran

Table of Contents

| Title | Page Number |
|---|--------------------|
| 1. Objectives | 2 |
| 2. Scope of Application | 2 |
| 3. Implementation Responsibility | 2 |
| 4. Definitions | 2 |
| 5. Description of Measures | 3 |
| 5.1. Processes of issuing ratification license for type-approval of automobiles | 4 |
| 5.1.1. Issuing ratification license for type-approval of imported automobiles | 8 |
| 5.2. Modifying the ratification license for type-approval | 8 |
| 5.3. Renewal of the ratification license for type-approval | 8 |
| 6. Annulling the ratification license for type-approval | 9 |
| 7. Issuing COC | 10 |
| 7.1. Conformity assessment of imported automobiles (using physical inspection checklist of automobiles- appendix 5) | 10 |
| 8. Related documents | 10 |
| 9. Records Archive | 11 |
| 10. Receivers of manuscripts | 11 |
| 11. Appendixes | 13 |

1. Objectives

This manual style is developed to determine a procedure for issuing ratification license of type-approval for imported automobiles in order to assure the conformity of the approved specifications of type with the mandatory standards of automobiles and conformity of the imported automobiles with the automobiles holding type-approval certificate throughout the validity period of the certificate.

2. Scope of Application

Institute of Standards and Industrial Research of Iran

This manual style includes all the complete or incomplete motor vehicles in the groups M, N and O (according to the definitions set forth in national standard 6924).

3. Implementation Responsibility

The responsibility for executing this manual style shall be borne by the import and export commodities quality assessment bureau of Institute of Standards and Industrial Research of Iran, the general standard offices of the provinces and the quality assessment deputy shall supervise the good performance.

4. Definitions

The following terms and expressions are used in this manual style:

- 4.1. **Ratification license for type-approval:** a certificate issued for the type of automobile regarding its' conformity with the mandatory standards and conditions and regulations of this manual style.
- 4.2. **Imported automobiles:** an automobile the first three ID number of which belongs to foreign automakers.
- 4.3. **Brand new automobile:** an automobile which has moved less than 99 km at the time of physical inspection.

Note: if the distance between the origin customs to the destination is paved by the imported automobile and the automobiles paved distance is equal to the distance from the manufacturing country to the customs of Iran, the automobile will be reckoned as brand new upon the approval of the related customs.

- 4.4. **Organization:** it implies the national standard organization of Iran (Institute of Standards and Industrial Research of Iran)
- 4.5. **Quality assessment bureau:** it implies the import and export commodities quality assessment bureau of the national standard organization.

Institute of Standards and Industrial Research of Iran

- 4.6. **General office:** it implies the general standard office of the province through which the automobile has entered the country.
- 4.7. **Inspection company:** imports inspection company (surveillance) which is certified and authorized by National Accreditation Center of Iran (NACI) in the field of inspecting imported automobiles according to regulations and by-laws of approving the inspection companies and inspection regulations of commodities.
- 4.8. **Applicant:** A natural or legal entity who has managed to obtain the foreign representative activity certificate from the trade union of Iran and are introduced to the organization by the ministry of industry, mines and trade for receiving the type-approval certificate.
- 4.9. Foreign Company: it implies any of the following titles:
- 4.9.1. The manufacturer of the product and owner of the trade mark
 - 4.9.2. The owner of trade mark (brand)
 - 4.9.3. Branches or offices included in paragraphs 1 and 2.
 - 4.9.4. Companies authorized to grant representation or agency by any of the paragraphs 1, 2 and 3.
- 4.10. **Initial physical inspection of automobiles:** Inspection that is carried out after or simultaneously with the control of type-approval documents by the inspection company regarding the type of automobile inside or outside of the country to check the conformity of the overall verification number of automobile or the document numbers for separate type-approval, the first 11 character of chassis number, energy consumption label, marks and numbers of E/eMARK and all the items mentioned in the physical inspection checklist with the presented documents.
- 4.11. **The validity period of type-approval certificate:** the validity period of type-approval certificate for the imported vehicles based on the date of submitted documents and with the presumption of lack of any changes in the technical and physical characteristics of automobiles, is 1-2 years after the date of issuance and at most until the end of next Christian year.

Institute of Standards and Industrial Research of Iran

4.12. All the terms and expressions defined in the Iranian national standard no. 6924.

5. Description of Measures

The ministry of industry, mines and trade sends the documents of the applicant the quality assessment bureau for reviewing the technical documents of automobiles and receiving the ratification license of type approval.

- a. The applicant of ratification license of type-approval must prepare the documents for approving the type of automobile and visit one of the inspection companies for control.
- b. The inspection company examines the type-approval documents and ensure the conformity of imported automobiles (as separated by type, class and model) with the submitted documents and also ensures the accuracy and originality of the received documents.
- c. Inspection company issues the automobiles COC and sends them to the import and export commodities quality assessment bureau along with the forms of inspecting the mandatory standards of type-approval (appendix 1-form no. FR. 01), the approvals of originality of E Marks and disks including automobile physical inspection checklists, automobile technical specifications form, (appendix 2- form no. FR.02) and all the related correspondences.
- d. In circumstances where all the documents, reports of type-approval tests, E/e-MARK certificates related to type of automobile and the report of initial physical inspection are acceptable and if the requirements are met, the automobile type-approval certificate will be ratified.
- e. After the issuance of type-approval ratification license, the case along with the full specification and the first 11 digits of automobiles ID number shall be announced in the technical committee of imported automobiles to the ministry of industry, mines and trades.

5.1. Processes of issuing ratification license for type-approval of automobiles

5.1.1. Investigating the documents

5.1.1.1. The official representative of the automaker in addition to announcing the manufacturing country and the place of assembly of the automobile should introduce and categorize the imported automobile based on category, type, variant and version according to the national standard of Iran no. 6924 and send their official application (according to appendix 8- form no. FR.08) along with the documents to one of the authorized inspection companies for examining their accuracy and originality and preparing technical report.

5.1.1.2. The official representative of the automaker shall introduce the technical and experience expert in the field of automobile type-approval to the quality-assessment bureau and the inspection company.

5.1.1.3. the official representative is obliged to conclude a contract with selected authorized inspection company. In this contract, the inspection company is obliged to perform all the related activities mentioned in this manual style. Likewise, the official representative is obliged to cooperate with the inspection company in the framework of this manual style.

5.1.1.4. After concluding the contract mentioned in paragraph 5.1.1.3. the inspection company is obliged to announce a list of all the required documents to the applicant.

The said list includes the following items:

- a. Whole Vehicle Type Approval based on requirements of national standard of Iran no. 6924 and according to the latest revision of European standard EC/2007/46 or the E/Mark certificate of type-approval of the mandatory standards (separate standards) based on the requirements of national Iranian standard no. 6924.

Institute of Standards and Industrial Research of Iran

The separate E/e-MARK certificate should include the test report and the technical information documents as separated by mandatory safety-performance standards subject to the type of automobile.

- b. Technical specifications form (appendix 2- form no. FR. 02)
- c. The table related to automobile's fuel consumption and CO2 emission rate (appendix 3- form no. FR.03)

Note 1: when presenting Whole Vehicle Type Approval (WVTA), the applicant in addition to the WVTA should present the E/e-MARK certificate, installing lights, and mounting tires. In case of not presenting the E/e-MARK certificate, installing lights, and mounting tires, the inspection company shall take actions to investigate the conformity or nonconformity of the automobile with the related standards in one of the domestic or foreign valid laboratories.

Note 2: For imported automobiles holding WVTA, it is essential to mention the WVTA number on the ID plate of the automobile.

Note 3: For automobiles with separate approval, the E/e-MARK should be presented separately and the inspection company shall verify it. The E/e-MARK number shall be inserted on the automobile's ID plate in a legible and permanent manner and should be placed on the automobile's body in an easily observable way (appendix 4- form no. FR.04).

5.1.1.5. The official representative is obliged to deliver the original or certified copy of all the documents requested according to paragraph 5.1.1.4. to the inspection company.

5.1.1.6. The official representative is obliged to complete the technical specifications of the automobile as separated by type according to chapter two or four of the national Iranian standard no. 6924 and submit the form to the inspection company.

5.1.1.7. The declared technical specifications according to appendix 2 (paragraph 5.1.1.6.) should be signed by the applicant and the inspection company and sealed by the legal representative company and the inspection company.

Institute of Standards and Industrial Research of Iran

5.1.1.5. The foreign company must announce the certificate number E/eMARK related to automobile-type approval (list of all included standards documents) and certify the conformity of all the imported automobiles to Iran (mentioning type, category, variant and version and the first 11 characters) with the describe documents.

5.1.1.9. The inspection company is required to decode the first 11 digits of automobile's identification number according to type, version, variant and category based on the type-approval documents including the WVTA or the E/e-MARK certificate of ID plate.

Note: regarding automobiles which are manufactured by accredited countries (countries whose standards are accepted by national Iranian standard organization), if the first 11 digits of the automobile's identification plate or the automobile type-approval certificate is not decoded, the declaration of the automaker or the representative that is authorized to grant agencies will be accepted in this regard. To verify the accuracy and originality of the declaration, it is necessary to obtain the approval of chamber of commerce, the embassy of Iran in the country of company who grants authorized representativeness and the office of registering documents in the ministry of foreign affairs.

5.1.1.10. The inspection company is required to check the conformity of E/e-MARK of the parts with the received document's when performing the automobile's physical inspection after receiving the documents of mounting the lights and tires.

5.1.1.11. As the ESC systems are necessary for all imported automobiles of group M1, presenting the controllability test certificate of the automobiles is not necessary.

5.1.1.12. After examining the documents submitted by the applicant, the inspection company should take actions to issue certificate of conformity or non-conformity of the said documents with the specifications of the inspected automobiles (mentioning the type, version, category and variant and the first 11 digit of ID number is necessary).

5.1.2. The initial physical inspection of automobile (in the process of ratification of type-approval certificates)

Institute of Standards and Industrial Research of Iran

5.1.2.1. The initial physical inspection of the automobile should be carried out by the inspection company after inspection and verification of documents of tests of type-approval and other documents obtained according to paragraph 5.1.1.5. from the applicant. The process of examining E/e-MARK certificates and the physical inspection of automobiles can be performed simultaneously if needed.

5.1.2.2. The applicant is obliged to present the sample automobile to the inspection company to perform the physical inspection.

5.1.2.3. The inspection company is required to complete the primary physical inspection form according to the primary physical inspection checklist (appendix 5- Form No. FR.05) and present them along with the categorized images of the automobile to the quality assessment bureau.

5.1.2.3. The inspection company is required to control the conformity of the fixed 11 digits of vehicle identification number (VIN) and all the information mentioned in the identification plate announced in the approved documents with the identification number on the automobile's ID plate.

5.1.2.3. After receiving the documents in articles 5.1.1.4 to 5.1.1.9, the inspection company is required to check the conformity of the primary physical inspection with the provisions of certificates, test reports, and the technical information attachments of automobiles, and send one series of copies from all the documents along with the COC (appendix 7- form number FR. 07) and the inspection report forms of mandatory standards of type-approval and the technical specifications of imported automobiles which are signed and sealed by the inspection company to the quality assessment bureau.

5.1.2.3. Decisions regarding the acceptance of E/e-MARK documents related to automobile or haulers with low production numbers are taken in the quality assessment bureau and, after the final decisions, the applicant can visit the inspection company.

5.1.5. Ensuring the originality of the received e-marks and their ratification by the inspection company

Institute of Standards and Industrial Research of Iran

The originality of the received e-marks can be ensured using one of the following ways:

5.1.5.1. The declaration of the automobile manufacturer or their certified representatives or the center of issuing e-marks regarding the received approvals must be certified by the chamber of commerce and finally the embassy of Iran in the country which grants authorized representatives. The originality of the seal of chamber of commerce and embassy of Iran shall be ensured through the documents registration sector of the ministry of foreign affairs.

Note: In the approval of accuracy and originality of the documents presented by the issuing body or the manufacturer of automobiles, the type, version, category and variety and the first 11 digits of VIN should be announced and verified. The presented certificates of type-approval as separated or Whole Vehicle Type Approval (WVTA) (inserting the E/e-MARK certificate numbers of separate standards the extension number of which are mentioned or inserting the verification number of WVTA and the table in the said certificate regarding the E/e-MARK certificate numbers the extension number of which are mentioned is essential) conform to the said vehicles which are imported into Iran. The official representative must send the documents to the inspection companies attached to a letter in which the originality of the above-mentioned documents is verified and all the related responsibilities are accepted).

5.1.5.2. by referring to the central site of issuing e-mark.

5.1.5.3. Sending e-mail to the electronic central site issuing the e-mark and receiving the approval.

5.1.5.4. Combination of the above mentioned methods

Note 1: In case of performing the processes of 5.1.5.2. and 5.1.5.3., the inspection company should print the copies of the pages and seal.

Note 2: In case of necessity, the experts of national Iranian standard organization and the inspecting company can inspect the manufacturing process of the imported automobile and also

Institute of Standards and Industrial Research of Iran

ensure the accuracy and originality of the submitted documents. In this case, the applicant is obliged to set the necessary coordination and cooperation while accepting the related costs.

5.1.6. Issuing the ratification license for type-approval of imported automobiles

5.1.6.1. If all the submitted documents, report of type-approval tests, E/e-MARK certificates related to type of vehicle and the initial physical inspection report are accepted, the quality assessment bureau, after receiving the documents and in case of observing the requirements, will ratify the vehicle's type-approval; if the related regulations are not observed, the violations will be reported to the inspection company.

5.1.6.2. After the issuance of type-approval ratification license, the case along with the full specification and the first 11 digits of automobiles ID number shall be announced in the technical committee of imported automobiles to the ministry of industry, mines and trades.

5.1.6.3. At the discretion of the organization, sampling and testing will be done for any of the imported vehicles.

5.2. Revising the type-approval ratification certificate

In circumstances that the technical and physical changes on a verified vehicle influence the conformity with the related standards or lead to change in any of the items including the 11 digits of the VIN, type, variety, category and version of the vehicle, the holder of the certificate is required to inform the inspection company regarding the changes and starts their application by renewing the type-approval. The inspection company inspects the difference of the changed product with the verified product before the changes and announces the items together with the completed certificates the new physical inspection record to the quality assessment bureau. Under these conditions, the previous approval is revised and will be issued again by the quality assessment bureau.

5.3. Renewing the ratification certificate of type-approval

The certificate holder is required to send the renewal application to the concerned inspection company three months before the expiry date. While examining and physically inspecting the imported vehicles, the inspection company will act as follows:

5.3.1. In case of no changes in the technical and physical specifications, the inspection company, while confirming this issue, presents the following documents to the quality assessment bureau:

A. Self-declaration of the mother company (appendix 6 form no. FR.06) about lack of any changes in the technical and physical specifications of the imported vehicles with the vehicle which has previously obtained type-approval certificate, holding accuracy and originality certificate from the chamber of commerce of manufacturing company and the embassy of Iran in the manufacturing company; To verify the accuracy and originality of the seal of chamber of commerce and the embassy of Iran, it is necessary to act through the office of registering documents in the ministry of foreign affairs.

B. Self-declaration of the official representative regarding the lack of any changes in physical or technical specifications or year of production of the vehicle with the type-approved vehicle and announcing the last 11 digits of the said vehicle.

C. Performing physical inspection and in case of not changing, announcing it along with the physical inspection check list with the related images (specifying the model and variety of the vehicle along with the 11 digits of the VIN according to the plate ID documents is essential).

5.3.2. In case of lack of technical or physical specifications or lack of changes in the related regulations, the type-approval certificates of imported vehicles issued by the quality assessment bureau are extendable up to 3 years. After 3 years, the official representative is required to renew the certificate and present new documents according to the instructions.

Institute of Standards and Industrial Research of Iran

5.3.3. In case of technical and physical changes which influence the conformity with the related standards or lead to change in any of the items including the first 11 digits of VIN, type, category, variety or version of the vehicle, the inspection company is required to, while sending physical inspection report along with the images, announce the changes to the quality assessment bureau and take actions regarding sending the complement certificates.

6. Annulment of the type-approval ratification certificate

6.1. The quality assessment bureau, in case of occurrence of one of the following circumstances, shall take action regarding the cancellation of the type-approval ratification certificate as soon as possible:

6.1.1. If the validity of type-approval ratification certificate is expired and the applicant has not submitted the renewal application in the due time.

6.1.2. If it is approved that the applicant has made false claims or has presented invalid documents.

6.1.3. If the ministry of industry, mines and trade reports any violations of rules or regulations by the holder of the certificate of vehicle representativeness.

6.1.4. Based on the verdict of authoritative bodies.

7. Issuing COC

7.1. Process of assessing the conformity of new automobiles imported to the customs

Physical inspection of the new vehicles holding type-approval in the customs of the country takes place by the experts of the general office of standards of provinces or authorized inspection companies and includes the following processes:

Institute of Standards and Industrial Research of Iran

7.1.1. Conformity of model specifications of the imported vehicles with the vehicles holding type-approval ratification certificate based on the list of “vehicles holding type-approval ratification certificate” mentioned in the portal of the organization.

7.1.2. After reviewing the above-mentioned processes, the relate checklists are completed and in case of full conformity, the inspection certificate will be sent to the general standard office of the province by the inspection company (if the inspection is carried out by the general standard office, there is no need to issue inspection certificate).

7.2. The general standard office of the province, based on the purchase documents, physical inspection certificate of imported vehicles and incase of approval, will take actions regarding the issuance of COC or NCR for the consignment.

8. Related Documents

8.1. National Iranian Standard no. 6924 entitled “type-approval of motor vehicles and their haulers”.

8.2. National Iranian Standard no. 17472 entitled “road vehicles, vehicle assessment, cars”.

8.3. National Iranian Standard no. 17473 entitled “road vehicles, vehicle assessment, light duty pickups”.

8.4. National Iranian Standard no. 17474 entitled “road vehicles, assessment of commercial vehicles (mini-truck, truck and hauler)”.

8.5. National Iranian Standard no. 17475 entitled “road vehicles, vehicle assessment, public passenger vehicles (mini bus, middle bus and bus)”.

9. Records Archive

All the documents related to this manual style will be kept for 5 years in the organization.

Institute of Standards and Industrial Research of Iran

10. Receivers of manuscripts

10.1. Quality assessment deputy

| | | | |
|--|------------|-------------------------|----------|
| | Developers | Reviewers and Verifiers | Approver |
|--|------------|-------------------------|----------|

10.2. Import and export commodities quality assessment bureau

10.3. General standard offices of provinces

10.4. Iranian association of vehicle importers

10.5. Authorized inspection companies in the field of vehicle inspection

10.6. Inspection and auditing association of Iran

Institute of Standards and Industrial Research of Iran

| | | | |
|-----------|---|---|-----------------------|
| Full Name | 1. Ahmad Mansoori 2. Azemat Hossin Poor 3. Siavash Khoda Bakhshi 4. Mehdi Halm Zadeh | 1. Moslem Bayat 2. Naghti Taghi Poor | Nireh Pirooz Bakht |
| Position | 1. Head of assessment group of quality of imported goods 2. Assessment expert of supervising vehicles' standards 3. Assessment expert of supervising vehicles' standards 4. Assessment expert of supervising vehicles' standards | 1. Quality assessment deputy 2. General manager of import/export goods quality assessment office | Head of the Institute |
| Signature | Signed | Signed | Signed |

Appendix 1

Appendix 1

| | | |
|---|--|--|
| Type Approval | | Name of manufacturing company: |
| Type Approval Extension | | |
| Number of imports/ production line: Application No: Application date: Manufacturing Country: | | Type of vehicle: Type of engine: Trade name: Variety, version, and category of vehicle: |
| Inspection date: | | Importer: |
| Date of issuing the results: | | Vehicle group: |

| Row | Standard title | Equivalent standard number | National standard no. | Application scope | Opinion of inspection company | Approval no. | Approval issuance body |
|-----|--|--|-----------------------|-------------------|-------------------------------|--------------|------------------------|
| 1 | Allowed noise level | DIRECTIVE 2007/34/EC UNECE Regulation 51 | 4243 | M,N | | | |
| 2 | Pollution (Euro 5 and 6) light weight vehicles/access to information | Regulation(EC) 715/2007 UNECE Regulation 83 UNECE Regulation 101 | 4241 -2 | M1,M2,N1,N2 | | | |
| 1-2 | Pollution (Euro 5) | Regulation(EC) 595/ 2009 | 8361 | M,N | | | |

| Row | Standard title | Equivalent standard number | National standard no. | Application scope | Opinion of inspection company | Approval no. | Approval issuance body |
|-----|----------------|----------------------------|-----------------------|-------------------|-------------------------------|--------------|------------------------|
|-----|----------------|----------------------------|-----------------------|-------------------|-------------------------------|--------------|------------------------|

Institute of Standards and Industrial Research of Iran

| | | | | | | | |
|-----|--|---|-----------------|--|--|--|--|
| | Heavy duty vehicle/ access to information | | | | | | |
| 1-3 | Preventing fire hazards (liquid fuel vessels) | Regulation (EC)No 661/2009 UNECE Regulation 34 | 10941 | M, N, O For vehicles with LPG or CNG fuel, type approval should take place based on Standard R67 or R110. | | | |
| 2-3 | Width protection of beneath the chassis rear of vehicle (RUPD) and mounting it | Regulation(EC)No 661/2009 UNECE Regulation 58 | INSOUNECER58 | M,N,O | | | |
| 4 | Position of mounting the plate at the rear part of vehicle | Regulation(EC) 661/2009 Regulation (EU) 1003/2010 | 6491 | M,N,O | | | |
| 5 | Steering wheel equipment | Regulation (EC) 661/2009 UNECE Regulation 79 | INSOUNECE-R 79 | M,N,O | | | |
| 6 | Lock and hinge | Regulation(EC)No661/2009 UNECE Regulation 11 | INSOUNECE-R 11 | M1,N1 | | | |
| 7 | Access to vehicle and maneuverability | Regulation(EC)No661/2009 Regulation (EU) No 130/2012 | INSOUNECE-R 130 | M,N | | | |
| 8 | Warning signs and marks | Regulation(EC)No661/2009 | INSO- | M,N | | | |

Institute of Standards and Industrial Research of Iran

| Row | Standard title | Equivalent standard number | National standard no. | Application scope | Opinion of inspection company | Approval no. | Approval issuance body |
|------|---|--|-----------------------|-------------------|-------------------------------|--------------|------------------------|
| | Audio | UNECE Regulation 28 | UNECE –R 28 | | | | |
| 9 | Indirect vision tools and mounting them | Regulation (EC)No661/2009 UNECE Regulation 46 | INSOUNEC E-R 46 | M,N | | | |
| 10 | Braking system of motor vehicles and haulers | Regulation(EC)No661/2009 UNECE Regulation 13 | INSOUNEC E-R 13 | M2,M3,N, O | | | |
| 11 | Braking system of cars (light duty vehicles) | Regulation(EC)No661/2009 UNECE Regulation 13-H | INSOUNEC E-R 13-H | M1,N1 | | | |
| 12 | Electromagnetic compatibility | Regulation(EC)No661/2009 UNECE Regulation 10 | INSOUNEC E-R 10 | M,N,O | | | |
| 13 | Interior connections | Regulation(EC)No 661/2009 UNECE Regulation 21 | INSOUNEC E-R 21 | M1 | | | |
| 1-14 | Protecting the vehicle against unauthorized use | Regulation (EC) No661/2009 UNECE Regulation 18 | INSOUNEC E-R 18 | M2,M3,N 2 ,N3 | | | |
| 2-14 | Protecting the vehicle against unauthorized use-light weight | Regulation (EC) No661/2009 UNECE Regulation 116 | INSOUNEC E-R 116 | M1,N1 | | | |
| 15 | Protecting the driver against the steering wheel mechanism in the accidents | Regulation(EC)No661/2009 UNECE Regulation 12 | INSOUNEC E-R 12 | M1, | | | |

Institute of Standards and Industrial Research of Iran

| Row | Standard title | Equivalent standard number | National standard no. | Application scope | Opinion of inspection company | Approval no. | Approval issuance body |
|------|---|--|-----------------------|-------------------|-------------------------------|--------------|------------------------|
| 1-16 | Resistance of seats, backs, and their headrests | Regulation(EC)No661/2009 UNECE Regulation 17 | INSOUNECE -R 17 | M,N | | | |
| 2-16 | Resistance of seats, backs related to large passenger vehicles | Regulation(EC)No661/2009 UNECE Regulation 80 | INSOUNECE -R 80 | M2,M3 | | | |
| 1-17 | Outer protrusions and curves (first revision) | Regulation(EC)No661/2009 UNECE Regulation 26 | INSO 6622 | M1 | | | |
| 2-17 | Trade vehicles regarding the outer protrusions towards the front part from the back plate of their cabins | Regulation(EC)No661/2009 UNECE Regulation 61 | INSOUNECE -R 61 | N | | | |
| 18 | Speedometer tools | Regulation(EC)No661/2009 UNECE Regulation 39 | INSOUNECE -R 39 | M,N | | | |
| 19 | Recognizing the plates (first revision) | Regulation(EC)No661/2009 UNECE Regulation 19/2011 | INSO 6489 | M,N,O | | | |
| 20 | Supports of the safety belt, holding and protection systems | Regulation(EC)No661/2009 UNECE Regulation 14 | INSOUNECE -R 14 | M,N | | | |
| 21 | The safety belt, and holding and protection systems, baby holding systems and children holding ISOFIX systems | Regulation(EC)No661/2009 UNECE Regulation 16 | INSOUNECE -R 16 | M,N,O | | | |
| Row | Standard title | Equivalent standard number | National | Application | Opinion of | Approval | Approval |

Institute of Standards and Industrial Research of Iran

| | | | standard no. | scope | inspection company | no. | issuance body |
|------|---|---|-------------------|-------|--------------------|-----|---------------|
| 22 | Installing lighting tools and light warning tools (2 nd revision) | Regulation(EC)No661/2009 UNECE Regulation 48 | INSO 6479 | M,N,O | | | |
| 23 | Neon lamp | Regulation(EC)No661/2009 UNECE Regulation 3 | INSOUNECE-R 3 | M,N,O | | | |
| 1-24 | Front and rear positions, brakes and end lights | Regulation(EC)No661/2009 UNECE Regulation 7 | INSOUNECE-R 7 | M,N,O | | | |
| 2-24 | Daylights for driving at day for motor vehicles | Regulation(EC)No661/2009 UNECE Regulation 87 | INSO 20457 | M,N | | | |
| 3-24 | Lateral marker light | Regulation(EC)No661/2009 UNECE Regulation 91 | INSOUNECE-R 91 | M,N,O | | | |
| 25 | Blinker | Regulation(EC)No661/2009 UNECE Regulation 6 | INSOUNECE-R 6 | M,N,O | | | |
| 26 | Rear plate lighting | Regulation(EC)No661/2009 UNECE Regulation 4 | INSO 6495 | M,N,O | | | |
| 1-27 | Sealed front halogen light (HSN) (emitter of asymmetric low and high beams) | Regulation(EC)No661/2009 UNECE Regulation 31 | INSO 10475 | M,N | | | |
| 2-27 | Incandescent lamps used in lights approved for motor vehicles and their haulers | Regulation(EC)No661/2009 UNECE Regulation 37 | INSO 8500 | M,N,O | | | |

Institute of Standards and Industrial Research of Iran

| Row | Standard title | Equivalent standard number | National standard no. | Application scope | Opinion of inspection company | Approval no. | Approval issuance body |
|------|--|--|----------------------------|-------------------|-------------------------------|--------------|------------------------|
| 3-27 | Front lights of vehicles equipped with gas evacuation light sources | Regulation(EC)No661/2009 UNECE Regulation 98 | INSO 10474 | M,N | | | |
| 4-27 | Gas-discharge light sources used in approved gas lamps used in motor vehicles | Regulation(EC)No661/2009 UNECE Regulation 99 | INSO 10473 | M,N | | | |
| 5-27 | Front lights of motor vehicles (emitter of asymmetric high and low beams) equipped with incandescent lamps or LEDs | Regulation(EC)No661/2009 UNECE Regulation 112 | INSO 10458 | M,N | | | |
| 6-27 | Front lights adaptive systems (AFS) for motor vehicles | Regulation(EC)No661/2009 UNECE Regulation 123 | INSO UNECE -R 123 | M,N | | | |
| 28 | Front fog light | Regulation(EC)No661/2009 UNECE Regulation 19 | INSO UNECE -R 19 | M,N | | | |

Institute of Standards and Industrial Research of Iran

| | | | | | | | |
|----|--|---|-----------------------|-------|--|--|--|
| 29 | Rear fog light | Regulation(EC)No661/2009 UNECE Regulation 38 | INSOUNECE -R 38 | M,N,O | | | |
| 30 | Tail light (rear gear light) and maneuver light (first revision) | Regulation(EC)No661/2009 UNECE Regulation23 | INSO 6492 | M,N,O | | | |
| 31 | Stop light for motor vehicles | Regulation(EC)No661/2009 UNECE Regulation 77 | INSO 7033 | M,N | | | |

| Row | Standard title | Equivalent standard number | National standard no. | Application scope | Opinion of inspection company | Approval no. | Approval issuance body |
|-----|---|--|------------------------|-------------------|-------------------------------|--------------|------------------------|
| 32 | Controllability (navigability) | ISO 7401 ISO 4138 ISO 3888 | INSO 6487 | M1 | | | |
| 33 | Tow hooks | Regulation(EC)No661/2009 UNECE Regulation 1005/2010 | INSO-EU 1005 | M,N | | | |
| 34 | Front vision field | Regulation(EC)No661/2009 UNECE Regulation 125 | INSOUNECE -R 125 | M1 | | | |
| 35 | Recognizing manual controls, warning system and markers | Regulation(EC)No661/2009 UNECE Regulation 121 | INSOUNECE -R 121 | M,N | | | |
| 36 | Anti-frost and fog system windshield (2 nd revision) | Regulation(EC)No661/2009 UNECE Regulation 672/2010 | INSO 4159 | M1 | | | |
| 37 | Wiping and washing system of the | Regulation(EC)No661/2009 UNECE Regulation | INSO-EU 1008 | M1 | | | |

Institute of Standards and Industrial Research of Iran

| | | | | | | | |
|----|-----------------|--|------------------------|--------------|--|--|--|
| | windshield | 1008/2010 | | | | | |
| 38 | Headrest | Regulation(EC)No661/2009 UNECE Regulation 25 | INSO 6506 | M1 M 3 M2 | | | |
| 39 | Heating systems | Regulation(EC)No661/2009 UNECE Regulation 122 | INSOUNECE -R 122 | M,N,O | | | |

Institute of Standards and Industrial Research of Iran

| Row | Standard title | Equivalent standard number | National standard no. | Application scope | Opinion of inspection company | Approval no. | Approval issuance body |
|------|--|--|-----------------------|--|-------------------------------|--------------|------------------------|
| 40 | Tire shields | Regulation(EC)No661/2009 UNECE Regulation 1009/2010 | INSO-EU 1009 | M1 | | | |
| 41 | Lateral shields | Regulation(EC)No661/2009 UNECE Regulation 73 | INSOUNECE-R 73 | N2,N3,O3, O4 | | | |
| 42 | Anti-dispersal systems | Regulation(EC)No661/2009 UNECE Regulation 109/2011 | INSO-EU 109 | N,O | | | |
| 43 | Weight and dimensions | Regulation(EC)No661/2009 UNECE Regulation 1230/2012 | INSO-EU 1230 | M,N,O | | | |
| 44 | Speed limiter | Regulation(EC)No661/2009 UNECE Regulation 89 | INSOUNECE-R 89 | M2,M3,N2 ,N3 | | | |
| 45 | Safety glasses and mounting them | Regulation(EC)No661/2009 UNECE Regulation 43 | INSOUNECE-R 43 | M,N,O | | | |
| 1-46 | Mounting the tires | Regulation(EC)No661/2009 UNECE Regulation 458/2011 | INSO-EU 458 | M,N,O | | | |
| 2-46 | Pneumatic tires of vehicles and their haulers (Class C1) | Regulation(EC)No661/2009 UNECE Regulation 30 | INSOUNECE-R 30 | M1, N1,O1, O2 | | | |
| 3-46 | Rotation noise pollutants | Regulation(EC)No661/2009 UNECE Regulation 54 | INSOUNECE-R 54 | M2, M3, N, O3, O4 (with minimum speed of | | | |

Institute of Standards and Industrial Research of Iran

| | | | | 80) | | | |
|------|--|--|-----------------------|-------------------------|-------------------------------|--------------|------------------------|
| 4-46 | | Regulation(EC)No661/2009 | INSO- | M,N,O | | | |
| Row | Standard title | Equivalent standard number | National standard no. | Application scope | Opinion of inspection company | Approval no. | Approval issuance body |
| | Tire, adhesion to wet floor and rolling resistance (class C1, C2, C3) | UNECE Regulation 117 | UNECE -R 117 | | | | |
| 5-46 | Spare tire for temporary use. Tires/ systems for movement on smooth surfaces and systems for controlling tires' air pressure | Regulation(EC)No661/2009 UNECE Regulation 64 | INSO UNECE -R 64 | M1, N1 | | | |
| 1-47 | Mechanical coupling parts from combined vehicles | Regulation(EC)No661/2009 UNECE Regulation 55 | INSO UNECE -R 55 | M, N, O | | | |
| 2-47 | Closed coupling tools (CCD), installing one verified CCD | Regulation(EC)No661/2009 UNECE Regulation 102 | INSO UNECE -R 102 | N2, N3, O3, O4 | | | |
| 48 | Combustion method | Regulation(EC)No661/2009 | INSO UNECE -R | M3 (classes II and III) | | | |

Institute of Standards and Industrial Research of Iran

| | | | | | | | |
|-----|--|--|---------------------------|---|-------------------------------|--------------|------------------------|
| | of interior materials of a specified group of motor vehicles | UNECE Regulation 118 | 118 | | | | |
| 49 | General structure of buses (passenger carriers of group M2, M3) (3 rd revision) | Regulation(EC)No661/2009 UNECE Regulation 107 | INSO 4160 | M2, M3 | | | |
| 50 | Strength of the main structure of large passenger vehicles | Regulation(EC)No661/2009 UNECE Regulation 66 | INSO 7815 | M2, M3 (classes B, II, III with more than 16 passengers) | | | |
| Row | Standard title | Equivalent standard number | National standard no. | Application scope | Opinion of inspection company | Approval no. | Approval issuance body |
| 51 | Protecting the passengers of cabin of the commercial vehicle | Regulation(EC) 661/2009 UNECE Regulation 29 | INSO 7034 | N | | | |
| 52 | Protection of passengers at the time of front collision | Regulation(EC)No661/2009 UNECE Regulation 94 | INSO UNECE- R 94 | M1 (maximum allowed technical is weight 2.5 tons) | | | |
| 53 | Protection of passengers at the time of lateral collision | Regulation(EC)No661/2009 UNECE Regulation 95 | INSO UNECE- R 95 | M1, N1 ((R Point) (maximum distance of seat from ground is 700) | | | |
| 54 | Engine power | Directive 80/1269/EEC UNECE Regulation 85 | INSO 6483 | M,N | | | |
| 55 | Vehicles for | Regulation(EC)No661/2009 | 6741 | N,O | | | |

Institute of Standards and Industrial Research of Iran

| | | | | | | | |
|----|--|---|------------|-------|--|--|--|
| | carrying dangerous commodities | UNECE Regulation 105 | | | | | |
| 56 | Width protection beneath the front chassis | Regulation(EC)No661/2009 UNECE Regulation 93 | INSO 7499 | N2,N3 | | | |
| 57 | Protection of pedestrians | Regulation(EC) No 127 Regulation(EC) 78/2009 | INSO 14438 | M1,N1 | | | |
| 58 | Air ventilation systems | Directive 2006/40/EC | INSO 16444 | M1,N1 | | | |
| 59 | Hydrogen systems | Regulation(EC) 79/2009 | INSO 17470 | M,N | | | |
| 60 | General security | Regulation(EC) 661/2009 | INSO 17471 | M,N,O | | | |

Institute of Standards and Industrial Research of Iran

| Row | Standard title | Equivalent standard number | National standard no. | Application scope | Opinion of inspection company | Approval no. | Approval issuance body |
|-----|---|--|-----------------------|--|-------------------------------|--------------|------------------------|
| 61 | Gear shift marker | Regulation(EC) 661/2009 UNECE Regulation 65/2012 | INSO 16443 | M1-with maximum reference weight of 2610 kg. | | | |
| 62 | Advanced emergency brake system | Regulation(EC) 661/2009 UNECE Regulation 347/2012 | INSO-EU - 347 | M2,M3,N2 ,N3 | | | |
| 63 | Diversion from tack alert system | Regulation(EC) 661/2009 UNECE Regulation 351/2012 | INSO 17479 | M2,M3,N2 ,N3 | | | |
| 64 | Vehicle alert system | Regulation(EC) 661/2009 UNECE Regulation 97 | INSOUNECE -R 97 | M1,N1 | | | |
| 65 | Electric vehicle | Regulation(EC) 661/2009 UNECE Regulation 100 | INSO 21471 | M,N | | | |
| 66 | Requirements for mounting gas-fuel parts of CNG vehicles (2 nd revision) | Regulation(EC) 661/2009 UNECE Regulation 110 | INSO 7598 | M,N | | | |
| 67 | Road registration equipment | Directive 85/3821/EEC | INSO 6485 | M2,M3,N2 ,N3 | | | |

Appendix 2

**Imported vehicle's Technical specifications form
Presenting to general director of import and export commodities quality assessment
bureau of Institute of Standards and Industrial Research of Iran**

| | | | | | |
|-------------------------------------|-----------------------------|---------------|-----------------------------------|---------------------------------------|-----------------------|
| E/Mark number of WVTA | | | | | |
| Trade name of manufacturing company | Type/Variant/Version | Vehicle group | The name of manufacturing company | The name of authorized representative | Manufacturing country |
| | Type: | | | | |
| Trade name of the vehicle | Variant: | | | | Assembling country |
| | Version: | | | | |


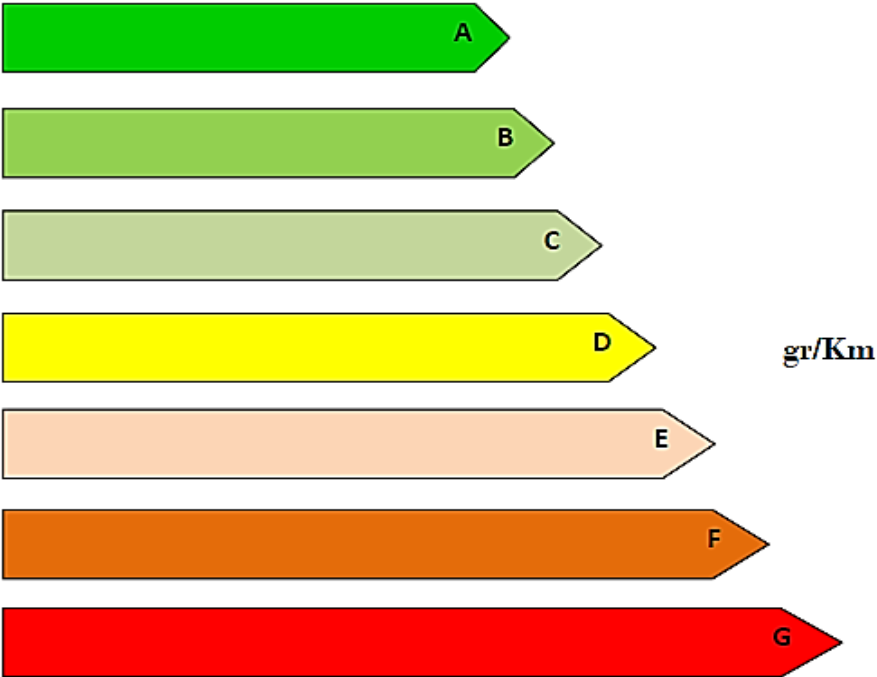
| Engine Type | Kw/ min ⁻¹ POWER/SPEED | Volume of engine and number of cylinders Cm³ | (L/100Km) light weight petrol and diesel fuel consumption | | | CO2 emission | | | Fuel type and feeding system | Capacity of the tank |
|-------------|---|---|---|---------------------------------|-----------------------|----------------------------------|--------------------------------|-----------------------------|------------------------------|----------------------|
| | | | Within cities Lit/100km | Between cities Lit/100km | Combined Lit/100km | Within cities g/Km | Between cities g/Km | combined g/Km | | |
| Engine Code | | | Diesel fuel consumption (g/Kwh) | | | Criteria for initial consumption | Criteria for final consumption | CO2 emission classification | | |
| | | | Fuel consumption g/kwh | Fuel consumption criteria g/kwh | Grade | | | | | |


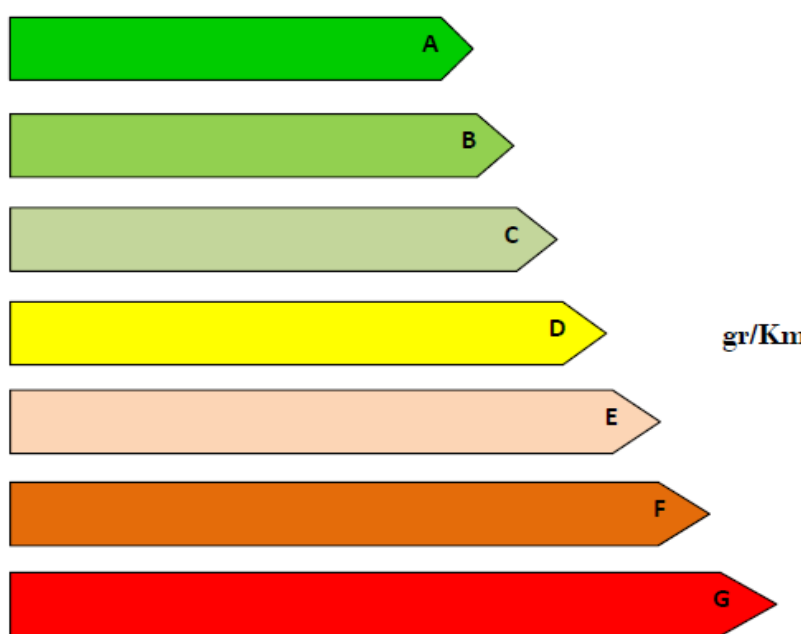
Institute of Standards and Industrial Research of Iran

| | | | | | |
|-------------------------------------|--------------|---------------------------|----------------------|-------|------------|
| Type of gearbox and number of gears | Type of body | Number of passenger seats | At least two airbags | (VIN) | Model/year |
| | | | | | |

| Combined Technical allowed loaded weight GCW(Kg) | Net weight (Kg) | (Running Order Mass)(kg) | Maximum allowed technical weight (Kg) (GVW) | Load distribution on the axis (Kg) | | Technical maximum allowed load of (Kg) axis | | Number of axis and number of moving axis | Tire size |
|--|-----------------|--------------------------|---|------------------------------------|-------------|---|-------------|--|-----------|
| | | | | First axis | Second axis | First axis | Second axis | | |
| | | | | | | | | | |

Appendix 3

| | | |
|---|--|---|
|  | Energy consumption label (petrol/diesel vehicles) | |
| Manufacturer Model of vehicle Power (kw)/weight (kg) | ----- ----- ---- Kg /---- Kw | Type of fuel: petrol Fuel consumption: Lit/100km: |
| CO2 emission Based on standard ISIRI4241-2 | ----- gr/Km | ----- gr/Km |
| <p>Allowed limits of fuel consumption</p>  | | |
| Emission of carbon dioxide (tons) in 20000 km: ----- | Fuel consumption in (lit) in 20000 km: ----- | Environmental class of the vehicle: Euro: ----- |

| | | |
|---|---|-------------------|
|  | Energy consumption label of diesel engines of heavy and semi-heavy road and off-road vehicles | |
| The needed equation to estimate the criteria number | $\text{BSFC}_{\text{base line power curve}} = 299.51 \times P_{\text{Engine}}^{-0.07}$ | |
| Nominal power of engine | ----- kw | |
| Engine model Manufacturing company and country | ----- ----- | |
| Brake special fuel consumption based on paragraph 5 of standard 8361 | -----,----- g/kwh | -----,----- g/kwh |
| | <p style="text-align: center;">Allowed limits of fuel consumption</p>  | |
| CO2 emission (g/kwh): ----- | Environmental class: Euro: ----- | |

Appendix 4

Fr.04:

ID plate of vehicles the type-approval documents of which are separate

ID plate(s) of vehicles the type-approval documents of which are separate must at least include the information of the following table according to national Iranian standard no. 6489 and shall be installed on the body in a legible, not erasable and steady manner and the place of installation should be visible.

| | |
|---|--------------------------------|
| <p>MANUFACTURER NAME</p> <p>Trade name:</p> <p>TYPE:..... VARIANTE:..... VERSION:.....</p> | |
| Ex R10 – document no. | Ex R51– document no. |
| Ex R11– document no. | Ex R58– document no. |
| Ex R13H– document no. | Ex R79– document no. |
| Ex R16– document no. | Ex R85– document no. |
| Ex R17– document no. | Ex R94– document no. |
| Ex R21– document no. | Ex R95– document no. |
| Ex R26– document no. | Ex R100– document no. * |
| Ex R28– document no. | Ex R121– document no. |
| Ex R39– document no. | Ex R125– document no. |
| Ex R48– document no. | Ex R127– document no. |

R100 is required for vehicles with electrical propulsion.

Institute of Standards and Industrial Research of Iran

Appendix 5

| | | | |
|---|--|---|--|
| Manufacturing company: | | Trade name of the vehicle: Type: Variety: Model: | |
| Type of Body: For Group M1: Saloon <input type="checkbox"/> Hatch Back <input type="checkbox"/> Station <input type="checkbox"/> Coupe <input type="checkbox"/> Crook <input type="checkbox"/> Multipurpose Vehicle <input type="checkbox"/> Large Station <input type="checkbox"/> For Group M2 and M3: One/Two Floor Vehicle <input type="checkbox"/> One/Two Floor Vehicle with Joint <input type="checkbox"/> Low-Floor One/Two Floor Vehicle <input type="checkbox"/> Low-Floor One/Two Floor Vehicle with Joint <input type="checkbox"/> One/Two Floor Vehicle Without Roof <input type="checkbox"/> Bus Chassis <input type="checkbox"/> For Group N: Pickup-Truck <input type="checkbox"/> Van <input type="checkbox"/> Half-Trailer Hauler <input type="checkbox"/> Road Hauler <input type="checkbox"/> Pickup <input type="checkbox"/> Truck Without Load Cabin <input type="checkbox"/> For Group O: Half-Hauler <input type="checkbox"/> Hauler with Joint Rod <input type="checkbox"/> Central Axis Hauler <input type="checkbox"/> Hauler with Middle Joint Rod <input type="checkbox"/> | | Manufacturing/assembling company: Model (year): | |
| Group of Vehicle: M1 <input type="checkbox"/> M2 <input type="checkbox"/> M3 <input type="checkbox"/> N1 <input type="checkbox"/> N2 <input type="checkbox"/> N3 <input type="checkbox"/> O1 <input type="checkbox"/> O2 <input type="checkbox"/> O3 <input type="checkbox"/> | | Type of gearbox: TIPTRONIC <input type="checkbox"/> AT <input type="checkbox"/> MT <input type="checkbox"/> other <input type="checkbox"/> | |
| Type of Fuel: Petrol <input type="checkbox"/> Diesel <input type="checkbox"/> Hybrid <input type="checkbox"/> Electric <input type="checkbox"/> Other <input type="checkbox"/> | | Volume of engine and number of cylinders: cc/cylinders: | |
| Size of tire mounted on the vehicle: | | Movable axis: AWD <input type="checkbox"/> 2WD <input type="checkbox"/> 4WD <input type="checkbox"/> 4*2 <input type="checkbox"/> 6*4 <input type="checkbox"/> other <input type="checkbox"/> | |
| Size of spare tire (if any): | | Travelled distance based on vehicles gauge: --- - | |
| Type and Number of Engine: | | New/used: | |
| Brake System: ABS: Yes <input type="checkbox"/> No <input type="checkbox"/> ESC: Yes <input type="checkbox"/> No <input type="checkbox"/> | | Name of importer: | |
| ID Plate: Yes <input type="checkbox"/> No <input type="checkbox"/> | | Inspection location: | |
| E-Mark Number (WVTA): Yes <input type="checkbox"/> (enter please) No <input type="checkbox"/> | | Inspection date: | |
| E-Mark Number of type-approval of mandatory standards in separate form: Yes <input type="checkbox"/> (enter please) No <input type="checkbox"/> | | Inspector name: | |
| VIN: | | Performa invoice / invoice / | |
| Maximum allowed technical weight (GVW): | | | |
| Maximum combined allowed technical weight (GCW): (enter if available): | | | |
| Maximum allowed weight of first axis: Maximum allowed weight of second axis: | | | |
| Maximum allowed weight of third axis: (if any) Maximum allowed weight of third axis: (if any) | | | |
| Number of airbags | Number of seats (passengers) | | |
| Information of fuel consumption label includes: | | | |
| Fuel consumption label: Yes <input type="checkbox"/> No <input type="checkbox"/> | Engine power (Kw) | Combined petrol fuel consumption (L/100Km) | Co2 emission (g/km): |
| Environmental class: | Allowed range of co2 emission (g/km), allowed range of fuel consumption (g/kwh): | Diesel fuel consumption: (g/kwh) | Average Diesel fuel consumption: (g/kwh) |

Institute of Standards and Industrial Research of Iran

| Row | Subject and applications | Description of inspection | | Physical signs | National standard no. | Result of physical inspection | Descriptions |
|-----|--|---|---|----------------|--|---|--------------|
| 1 | Front lights of motor vehicles (emitter of asymmetric high and low beams) equipped with incandescent lamps or LEDs. (obligatory for groups M and N). | Inspecting the presence of low beam and its indicative light | The light should have white light. Indicative light is optional (the panel surface's turning on will suffice). The indicative light must be green. There should be two lights. Height: at least 500 mm and at most 1200mm above ground level. | <i>E-MARK:</i> | <i>ISIRI 10458 UNECE-R 48 UNECE-R112</i> | Conformity <input type="checkbox"/> Non-conformity <input type="checkbox"/> No-use <input type="checkbox"/> | |
| | | Inspecting the presence of high beam and its indicative light | The light should have white light. The indicative light must be blue. Indicative is obligatory. There should be two or four lights. | | | | |
| 2 | Sealed front halogen light (HSN) (emitter of asymmetric high and low beam) (obligatory for groups M and N). | Inspecting the presence of low beam and its indicative light. | The light should have white light. Indicative light is optional (the panel surface's turning on will suffice). The indicative light must be green. There should be two lights. Height: at least 500 mm and at most 1200mm above ground level. | <i>E-MARK:</i> | <i>ISIRI 10475 31UNECE UNECE-R 48</i> | Conformity <input type="checkbox"/> Non-conformity <input type="checkbox"/> No-use <input type="checkbox"/> | |

Institute of Standards and Industrial Research of Iran

| Row | Subject and applications | Description of inspection | | Physical signs | National standard no. | Result of physical inspection | Descriptions |
|-----|---|---|---|------------------------------------|---|---|--------------|
| | | Inspecting the presence of high beam and its indicative light | The light should have white light. The indicative light must be blue. Indicative is obligatory. There should be two or four lights. | | | | |
| 3 | Front lights of vehicles equipped with gas evacuation light sources (obligatory for groups M and N). | Inspecting the presence of low beam and its indicative light | The light should have white light. Indicative light is optional (the panel surface's turning on will suffice). The indicative light must be green. There should be two lights. Height: at least 500 mm and at most 1200mm above ground level. | <i>E-MARK:</i> | <i>ISIRI 10474</i> <i>UNECE-R98</i> <i>UNECE-R 48</i> | Conformity <input type="checkbox"/> Non-conformity <input type="checkbox"/> No-use <input type="checkbox"/> | |
| | | Inspecting the presence of high beam and its indicative light | The light should have white light. The indicative light must be blue. Indicative is obligatory. There should be two or four lights. | | | | |
| 4 | Front lights adaptive systems (AFS) for motor vehicles (optional for groups M and N and forbidden for group O). | It should have white light. One will suffice. | | <i>MARK:</i> <i>E-MARK:</i> | <i>INSO-UNECE-R 123</i> <i>UNECE-R 48</i> | Conformity <input type="checkbox"/> Non-conformity <input type="checkbox"/> No-use <input type="checkbox"/> | |

Institute of Standards and Industrial Research of Iran

| Row | Subject and applications | Description of inspection | | Physical signs | National standard no. | Result of physical inspection | Descriptions |
|------------|--|--|--|--|---|---|---------------------|
| 5 | Daylights for driving at day for motor vehicles (obligatory for groups M and N and forbidden for group O). | Inspecting the presence of daylight | Daylight should have white light. Daylight can be merged with the front light. | <i>MARK:</i> <i>E-MARK:</i> | <i>ISIRI 20457</i> <i>UNECE-R 48</i> | Conformity <input type="checkbox"/> Non-conformity <input type="checkbox"/> No-use <input type="checkbox"/> | |
| 6 | Front fog light (optional for groups M and N and forbidden for group O). | Inspecting the presence of front fog light and its indicative | The fog light should have white or yellow light. Indicative light is optional (with green light). Height: at least 250 mm above ground level. There should be two lights. | <i>MARK:</i> <i>E-MARK:</i> | <i>ISIRI 6488</i> <i>UNECE-R 48</i> | Conformity <input type="checkbox"/> Non-conformity <input type="checkbox"/> No-use <input type="checkbox"/> | |
| 7 | Rear view mirror (Obligatory for groups M and N). | Number of mirrors: 1. Class 1 mirror Practical <input type="checkbox"/> Not-Practical <input type="checkbox"/> 2. Class 2 mirror Practical <input type="checkbox"/> Not-Practical <input type="checkbox"/> 3. Class 3 mirror Practical <input type="checkbox"/> Not-Practical <input type="checkbox"/> 4. Class 4 mirror Practical <input type="checkbox"/> Not-Practical <input type="checkbox"/> 5. Class 5 mirror Practical <input type="checkbox"/> Not-Practical <input type="checkbox"/> 6. Class 6 mirror Practical <input type="checkbox"/> Not-Practical <input type="checkbox"/> 7. Class 1 mirror Practical <input type="checkbox"/> Not-Practical <input type="checkbox"/> Indirect view tools except mirror (such as camera): Practical <input type="checkbox"/> Not-Practical <input type="checkbox"/> Appropriate rear view by the mirrors from driver position- interior rear view mirrors should be adjustable by the driver during driving. | | <i>1-MARK:</i> <i>E-MARK:</i> <i>2-MARK:</i> <i>E-MARK:</i> <i>3- MARK:</i> <i>E-MARK:</i> <i>4- MARK:</i> <i>E-MARK:</i> <i>5- MARK:</i> <i>E-MARK:</i> <i>6- MARK:</i> <i>E-MARK:</i> | <i>UNECE-R46</i> | Conformity <input type="checkbox"/> Non-conformity <input type="checkbox"/> No-use <input type="checkbox"/> | |

Institute of Standards and Industrial Research of Iran

| Row | Subject and applications | Description of inspection | Physical signs | National standard no. | Result of physical inspection | Descriptions |
|------------|---|--|--|--------------------------------|---|---------------------|
| 8 | Width shield beneath the front chassis (Obligatory for groups N2 and N3). | Width shield beneath the front chassis | | <i>ISIRI : 7499</i> | Conformity <input type="checkbox"/> Non-conformity <input type="checkbox"/> No-use <input type="checkbox"/> | |
| 9 | Safety glasses (Obligatory for groups M and N, O (if any)). | Number of glasses of the vehicle | | <i>ISIRI 709 & 6894</i> | Conformity <input type="checkbox"/> Non-conformity <input type="checkbox"/> No-use <input type="checkbox"/> | |
| | | Front windshield | <i>MARK: E-MARK:</i> | | | |
| | | Rear windshield | <i>MARK: E-MARK:</i> | | | |
| | | Front lateral glass | <i>MARK: E-MARK:</i> | | | |
| | | Rear lateral glass | <i>MARK: E-MARK:</i> | | | |
| | | Quarter glass | <i>MARK: E-MARK:</i> | | | |
| | | Sunroof glass | <i>MARK: E-MARK:</i> | | | |
| | | Other glasses | <i>MARK: E-MARK:</i> | | | |
| 10 | Tires (Obligatory for groups M and N and O). | Spare tire: the spare tire is obligatory for all vehicles. Only if the tire is run flat, there is no need to spare tire. | <i>MARK: E-MARK: E-MARK (SWR):</i> | <i>ISIRI 1093 & 1093-2</i> | Conformity <input type="checkbox"/> Non-conformity <input type="checkbox"/> No-use <input type="checkbox"/> | |
| | | Tire left | <i>MARK: E-MARK: E-MARK (SWR):</i> | | | |

Institute of Standards and Industrial Research of Iran

| Row | Subject and applications | Description of inspection | | Physical signs | National standard no. | Result of physical inspection | Descriptions |
|-----|---|---|-------|--|---|--|--------------|
| | | First axis tire | Right | <i>MARK:</i> <i>E-MARK:</i> <i>E-MARK (SWR):</i> | | | |
| | | Second axis tire: | Left | <i>MARK:</i> <i>E-MARK:</i> <i>E-MARK (SWR):</i> | | | |
| | | | Right | <i>MARK:</i> <i>E-MARK:</i> <i>E-MARK (SWR):</i> | | | |
| | | Third axis tire: | Left | <i>MARK:</i> <i>E-MARK:</i> <i>E-MARK (SWR):</i> | | | |
| | | | Right | <i>MARK:</i> <i>E-MARK:</i> <i>E-MARK (SWR):</i> | | | |
| 11 | Tow hook (front tow hook is obligatory for groups M and N and O and back tow hook is practical for group M1). | The presence of a tow hook at the front part of the vehicle is essential- for vehicles group M1, the presence of back tow hook is also obligatory (except for vehicles that are not suitable for towing loads). | | ----- | <i>ISIRI 6490</i> | Present <input type="checkbox"/> Not-present <input type="checkbox"/> | |
| 12 | Blinker light (front and rear and lateral lights for groups M and N; rear lights for group O and lateral lights are obligatory for group O3). | The light should have amber color. Indicative is obligatory and it should be in green. There should be at least two front, two back and two lateral lights. Lateral blinker for groups M2, M3, N2, N3, with the length of more 9 meters, should be 3 on the left and 3 on the right. And for groups O3 and O4, there should be 3 blinkers on the right, 3 on the left. | | | <i>INSO-UNECE-R6</i> <i>UNECE-R 48</i> | Conformity <input type="checkbox"/> Non-conformity <input type="checkbox"/> | |

Institute of Standards and Industrial Research of Iran

| Row | Subject and applications | Description of inspection | | Physical signs | National standard no. | Result of physical inspection | Descriptions | | |
|-----|--------------------------|---|-------|---|--|-------------------------------|--------------|--|--|
| | | Back blinker light | Left | | <i>MARK:</i> <i>E-MARK:</i> <i>E-MARK (SWR):</i> | | | | |
| | | | Right | | <i>MARK:</i> <i>E-MARK:</i> <i>E-MARK (SWR):</i> | | | | |
| | | Lateral blinker light | Left | | <i>MARK:</i> <i>E-MARK:</i> <i>E-MARK (SWR):</i> | | | | |
| | | | Right | | <i>MARK:</i> <i>E-MARK:</i> <i>E-MARK (SWR):</i> | | | | |
| | | Front blinker light | Left | | <i>MARK:</i> <i>E-MARK:</i> <i>E-MARK (SWR):</i> | | | | |
| | | | Right | | <i>MARK:</i> <i>E-MARK:</i> <i>E-MARK (SWR):</i> | | | | |
| | | Examining the presence and operation of danger alarm and its indicative (flasher) The front, back, and lateral lights for groups M and N, back light for group O, and lateral light for groups O3 and O4 are obligatory. | | The lights should have amber color Simultaneous operation of blinkers Indicative is essential and can be the simultaneous function of blinker indicatives | <i>MARK:</i> <i>E-MARK:</i> | | | | Conformity <input type="checkbox"/> Non-conformity <input type="checkbox"/> |

Institute of Standards and Industrial Research of Iran

| Row | Subject and applications | Description of inspection | | Physical signs | National standard no. | Result of physical inspection | Descriptions |
|-----|--|---|--|---|--|--|--------------|
| 13 | Lateral indicative light (obligatory for groups M, N, O vehicles with more than 6 meters of length) | Inspecting the presence of lateral signal light and their indicative | <p align="center">Indicative is optional</p> <p>Height: at least 250 mm and at most 1500mm above ground (minimum lowest part and maximum highest part)</p> <p>Minimum number on sides should indicate the longitudinal requirements (not more than 3 meters from the front, not more than 3 meters distance between the lights, not more than 1 meter from the end of vehicle)</p> | <p><i>MARK:</i></p> <p><i>E-MARK:</i></p> | <p><i>UNECE-R91</i></p> <p><i>UNECE-R 48</i></p> | <p>Conformity <input type="checkbox"/></p> <p>Non-conformity <input type="checkbox"/></p> <p>No-use <input type="checkbox"/></p> | |
| 14 | Lateral shields (obligatory for groups N2, N3, O3, O4) | Presence of lateral shield | | ----- | <p><i>INSO-</i></p> <p><i>UNECE-R73</i></p> | <p>Present <input type="checkbox"/></p> <p>Not-present <input type="checkbox"/></p> <p>No-use <input type="checkbox"/></p> | |
| 15 | Anti-dispersal system (obligatory for groups N and O) | Presence of anti-dispersal system | | ----- | <p><i>INSO-</i></p> <p><i>UNECER109</i></p> | <p>Conformity <input type="checkbox"/></p> <p>Non-conformity <input type="checkbox"/></p> <p>No-use <input type="checkbox"/></p> | |
| 16 | Brake lights, front and rear position lights, rear and front ends light (obligatory for groups M, N, O). | <p>-inspecting the presence of brake lights and its indicative</p> <p>-main brake lights for M, N, O groups, and third brake lights are obligatory for M1 and N1 roofed vehicles.</p> | <p>The light should have red light.</p> <p>Indicative light is optional and include one blinking danger light which will turn on if brakes have a problem.</p> <p>Two main lights and a third brake light</p> <p>Height: at least 350 mm and at most 1500mm above ground level. Height of the 3rd light: at least 850 mm above ground</p> | <p><i>MARK:</i></p> <p><i>E-MARK:</i></p> | <p><i>UNECE-R7</i></p> <p><i>UNECE-R 48</i></p> | <p>Conformity <input type="checkbox"/></p> <p>Non-conformity <input type="checkbox"/></p> | |

Institute of Standards and Industrial Research of Iran

| Row | Subject and applications | Description of inspection | Physical signs | National standard no. | Result of physical inspection | Descriptions | Row |
|-----|--------------------------|---|--|--------------------------------|-------------------------------|---|-----|
| | | | | | | | |
| | | -inspecting the presence of front position light and its indicative for M and N groups, and for group O with a width of 1.6 meters is obligatory and it is optional for other groups. | The front position light should have white light. The indicative is optional (the panel's turning on will suffice). Height: at least 350 mm and at most 1500 mm above ground. There should be 2 or 4 lights. | <i>MARK:</i> <i>E-MARK:</i> | | Conformity <input type="checkbox"/> Non-conformity <input type="checkbox"/> No-use <input type="checkbox"/> | |
| | | -inspecting the presence of back position light and its indicative for M, N and O groups is obligatory. | The light should have white light. Height: at least 350 mm and at most 1500 mm above ground. There should be at least two lights. The indicative is obligatory (the panel's turning on will suffice). | <i>MARK:</i> <i>E-MARK:</i> | | Conformity <input type="checkbox"/> Non-conformity <input type="checkbox"/> | |
| | | -inspecting the presence of end position light and its indicative (front and back top limits) is obligatory for vehicles with a width of more than 2.1 meters. | The front end light should be white and the back end light should be red; indicative is optional. | <i>MARK:</i> <i>E-MARK:</i> | | Conformity <input type="checkbox"/> Non-conformity <input type="checkbox"/> No-use <input type="checkbox"/> | |

Institute of Standards and Industrial Research of Iran

| Row | Subject and applications | Description of inspection | | Physical signs | National standard no. | Result of physical inspection | Descriptions |
|-----|---|--|---|------------------|-----------------------------|---|--------------|
| 17 | Position of back number plate (obligatory for groups M, N, O) | Dimensions of number plate must be 520*120. | | | ISIRI 6491 | Conformity <input type="checkbox"/> Non-conformity <input type="checkbox"/> | |
| 18 | Fluorescents (obligatory for groups M, N, O) | Inspecting the presence of fluorescents of A. back-non-triangle (N obligatory, O optional) B. back-triangle (M, N forbidden, O obligatory) C. front-non-triangle (M, N optional, O obligatory) D. Lateral-non-triangle (M and N with a length of more 6 m and O obligatory, Others optional) | A. should be red. B. should be red. C. should be in the same color as the approved color. D. should be in amber (or if in group, should be in red along with the brake lights) | MARK: E-MARK: | UNECE-R3 UNECE-R48 | Conformity <input type="checkbox"/> Non-conformity <input type="checkbox"/> | |
| 19 | Stop light (optional for M, N, O groups with a maximum length of 6m and forbidden for other groups) | Inspecting the presence of stop light and its indicative | Front stop light should be white, back stop light should be red; indicative is optional | MARK: E-MARK: | ISIRI7033 | Conformity <input type="checkbox"/> Non-conformity <input type="checkbox"/> No-use <input type="checkbox"/> | |
| 20 | Tail light (rear gear light) (obligatory for groups M, N, O except O1) | Inspecting the presence of tail light and its indicative Presence of one tail light is obligatory. 2 nd light is optional for M1 group and vehicles with more than 6 m length and obligatory for vehicles more than 6 m except M1.) | Back gear light should be in white Indicative is optional There should be 1 or 2 lights. Height: at least 250 mm and at most 1200 mm above ground. If it is one, it should be opposite the steering wheel's direction. | MARK: E-MARK: | ISIRI 6492 UNECE-R48 | Conformity <input type="checkbox"/> Non-conformity <input type="checkbox"/> No-use <input type="checkbox"/> | |

Institute of Standards and Industrial Research of Iran

| Row | Subject and applications | Description of inspection | | Physical signs | National standard no. | Result of physical inspection | Descriptions |
|-----|--|---|--|--------------------------------|--|---|--------------|
| 21 | Maneuver light (Optional for M-N groups) | Inspecting the presence of maneuver light | The maneuver light has ML sign and should have white light. | <i>MARK:</i> <i>E-MARK:</i> | <i>ISIRI 6492</i> <i>23UNECE-R</i> <i>UNECE-R 48</i> | Conformity <input type="checkbox"/> Non-conformity <input type="checkbox"/> No-use <input type="checkbox"/> | |
| 22 | Back number plate light (obligatory for M-N, O groups) | Inspecting the presence of the rear number plate light and its indicative | The light should have white light. The indicative is optional. The height and number of lights should be such that it can laminate the back number plate space. | <i>MARK:</i> <i>E-MARK:</i> | <i>ISIRI 6495</i> | Conformity <input type="checkbox"/> Non-conformity <input type="checkbox"/> | |
| 23 | Rear fog light (Obligatory for M-N, O groups) | Inspecting the presence of the rear fog light and its indicative | The fog light should have white light. The indicative is obligatory as a non-blinking warning light with yellow color. Height: at least 250 and at most 1000 mm above ground. There should be 1 or 2 lights. | <i>MARK:</i> <i>E-MARK:</i> | <i>ISIRI 6504</i> <i>UNECE-R 48</i> | Conformity <input type="checkbox"/> Non-conformity <input type="checkbox"/> | |

Institute of Standards and Industrial Research of Iran

| Row | Subject and applications | Description of inspection | Physical signs | National standard no. | Result of physical inspection | Descriptions |
|-----|--|---|---|---|---|--------------|
| 24 | The presence of coupling (5 th tire and other couplings) (obligatory for groups O, M and N) | Presence of coupling | <i>CLASS:</i> <i>MARK:</i> <i>E-MARK:</i> | <i>INSO-UNECE R55</i> <i>UNECE-R 102</i> | Conformity <input type="checkbox"/> Non-conformity <input type="checkbox"/> No-use <input type="checkbox"/> | |
| 25 | Width shield beneath the rear chassis (obligatory for groups O, M and N) | Presence of Width shield beneath the rear chassis | - - - - - | <i>INSO-UNECE R58</i> | Conformity <input type="checkbox"/> Non-conformity <input type="checkbox"/> | |
| 26 | Anti-frost and fog system (obligatory for groups M and N) | Inspecting the good functioning of the anti-frost and fog system for group M1 Inspecting the presence of anti-frost and fog system for other motor vehicles (M and N). | - - - - - | <i>ISIRI 4159</i> | Conformity <input type="checkbox"/> Non-conformity <input type="checkbox"/> No-use <input type="checkbox"/> | |

Institute of Standards and Industrial Research of Iran

| Row | Subject and applications | Description of inspection | Physical signs | National standard no. | Result of physical inspection | Descriptions |
|-----|---|--|----------------|-----------------------|---|--------------|
| 27 | Wiping and washing system of the windshield (obligatory for groups M and N) | <p>- the wiping and washing system of group M1 should:</p> <p>a. M1 vehicles equipped with windshield wiping and washing should have at least two movement frequencies:</p> <p>b. The blades should return to their primary position after turning off the wipers.</p> <p>c. the wipers should have the ability to move manually to clean the glass with hand.</p> <p>Inspection the presence of wiping and washing system of other motor vehicles (M and N)</p> | - - - - - | <i>ISIRI 6683</i> | Conformity <input type="checkbox"/> Non-conformity <input type="checkbox"/> No-use <input type="checkbox"/> | |
| 28 | Anti-theft system (obligatory for groups M and N) | <p>A. Inspecting the presence of steering wheel lock, brakes lock, propeller lock or gear handle lock (obligatory for groups M1, N1)</p> <p>B. Inspecting the presence of steering wheel lock (for groups N2, N3, M2, M3)</p> <p>C. Immobilizers for group M1 and N1 with a maximum weight of 2 tons is obligatory. When the switch is in functioning mode, the immobilizer should not be active.</p> <p>D. Vehicle alert system (VAS) It should at least recognize the opening of any of the vehicle doors, the capote and the trunk.</p> | - - - - - | <i>ISIRI 6623</i> | Conformity <input type="checkbox"/> Non-conformity <input type="checkbox"/> No-use <input type="checkbox"/> | |

Institute of Standards and Industrial Research of Iran

| | | | | | | |
|----|---|--|-----------|-----------|---|--|
| 29 | Speedometer and gauge equipment (obligatory for groups M and N) | Clarity of the gauge screen a. the numbers shall be per 1, 2, 5 or 10 km/h for reading the gauging. It should be clear both in days and at nights (if it is in analogue). b. For maximum speed of 200 km/h, the speed intervals are at most 20 km/h. For maximum speed of 300 km/h, the speed intervals are at most 30 km/h. The km counters shall include at least 6 digits (groups M and N). | - - - - - | ISIRI6481 | Conformity <input type="checkbox"/> Non-conformity <input type="checkbox"/> No-use <input type="checkbox"/> | |
|----|---|--|-----------|-----------|---|--|

| Row | Subject and applications | Description of inspection | Physical signs | National standard no. | Result of physical inspection | Descriptions |
|-----|---|--|-----------------------|-----------------------|---|---|
| 30 | Recognizing the controllers, indicatives, and signals (obligatory for groups M and N) | Inspecting color, shape, and performance, presence of indicatives, operators and controls, indicatives of brakes, high beam, low beam and blinker lights should not all be displayed in one screen according to the related standard. | - - - - - | ISIRI 6493 | Conformity <input type="checkbox"/> Non-conformity <input type="checkbox"/> No-use <input type="checkbox"/> | |
| 31 | Aural warning tools (obligatory for groups M, N and O) | Their presence and function shall be checked. | | INSO- UNECE R28 | Conformity <input type="checkbox"/> Non-conformity <input type="checkbox"/> | |
| 32 | Safety belt (obligatory for groups M and N) | Safety belt for all forward seats of all vehicles is essential except for group O. (not obligatory for vehicles that have a place for passengers to stand). Presence of ISO Fix children protection systems f is obligatory or group M1 (mention if not practical). Seat belt alert system for group M1 both visual and aural. | Driver | MARK: E-MARK: | INSO- UNECE R16 | Conformity <input type="checkbox"/> Non-conformity <input type="checkbox"/> No-use <input type="checkbox"/> |
| | | | Front passenger | MARK: E-MARK: | | |
| | | | Left back passenger | MARK: E-MARK: | | |
| | | | Middle back passenger | MARK: E-MARK: | | |
| | | | Right back passenger | MARK: E-MARK: | | |
| | | | Other | | | |

Institute of Standards and Industrial Research of Iran

| Row | Subject and applications | Description of inspection | Physical signs | National standard no. | Result of physical inspection | Descriptions |
|-----|--|--|--|--|---|--------------|
| 33 | Brake system (obligatory for groups M, N and O) | ABS and ESC system indicative | - - - - - | <i>INSO-UNECE R13-H</i> <i>INSO-UNECE R13</i> | Conformity <input type="checkbox"/> Non-conformity <input type="checkbox"/> | |
| 34 | Strength of seats (obligatory for groups M and N) | Number of seats and the function of mechanisms (adjustability) | - - - - - | <i>INSO-UNECE R17</i> | Conformity <input type="checkbox"/> Non-conformity <input type="checkbox"/> No-use <input type="checkbox"/> | |
| 35 | Safety belt supports (obligatory for groups M and N) | Number and method mounting on the vehicles | Driver: Two-point <input type="checkbox"/> Three-point <input type="checkbox"/> Front passenger: Two-point <input type="checkbox"/> Three-point <input type="checkbox"/> Left back passenger: Two-point <input type="checkbox"/> Three-point <input type="checkbox"/> Middle back passenger: Two-point <input type="checkbox"/> Three-point <input type="checkbox"/> Right back passenger: Two-point <input type="checkbox"/> Three-point <input type="checkbox"/> Other passengers: Two-point <input type="checkbox"/> Three-point <input type="checkbox"/> | <i>INSO-UNECE R14</i> | Conformity <input type="checkbox"/> Non-conformity <input type="checkbox"/> No-use <input type="checkbox"/> | |


Institute of Standards and Industrial Research of Iran

| Row | Subject and applications | Description of inspection | Physical signs | National standard no. | Result of physical inspection | Descriptions |
|------------|--|--|--------------------------------|--|---|---------------------|
| 36 | Headrests (obligatory for lateral forward-looking seats of front passengers of group M1 and for lateral forward-looking seats of front passengers of group M2 and N1 with maximum weight of 3500 kg) | Number and adjustability inspection | ----- | <i>INSO-UNECE R25</i> <i>- INSO-UNECE17</i> <i>- INSO-UNECE-80</i> | Conformity <input type="checkbox"/> Non-conformity <input type="checkbox"/> No-use <input type="checkbox"/> | |
| 37 | Road registration equipment (obligatory for groups N2, N3, M2, M3) | Presence of tachograph | <i>MARK:</i> <i>E-MARK:</i> | <i>ISIRI 6485</i> | Conformity <input type="checkbox"/> Non-conformity <input type="checkbox"/> No-use <input type="checkbox"/> | |
| 38 | Safety air bag (obligatory for groups M1 and N1) | At least two airbags for the front passenger and the driver | | | Conformity <input type="checkbox"/> Non-conformity <input type="checkbox"/> No-use <input type="checkbox"/> | |
| 39 | Heat systems (obligatory for groups M, N, O) | Presence of heat system for M, N and O groups | | <i>INSO-UNECE R122</i> | Present <input type="checkbox"/> Not-Present <input type="checkbox"/> No-use <input type="checkbox"/> | |
| 40 | Air conditioner systems (obligatory for groups M1 and N1) | Presence of AC for M1 and N1 vehicles (with maximum weight of 1305 kg) | | <i>INSO 16444</i> | Present <input type="checkbox"/> Not-Present <input type="checkbox"/> No-use <input type="checkbox"/> | |

Institute of Standards and Industrial Research of Iran

| Row | Subject and applications | Description of inspection | Physical signs | National standard no. | Result of physical inspection | Descriptions |
|-----|--|--|----------------|-----------------------|---|--------------|
| 41 | Gear shift indicator (obligatory for groups M1) | Presence of gear shift indicator for group M1 vehicles which have manual transmission system or manual mode (such as <i>TIPTRONIC</i>) (with maximum weight of 2610 kg) | | <i>INSO 16443</i> | Present <input type="checkbox"/> Not-Present <input type="checkbox"/> No-use <input type="checkbox"/> | |
| 42 | Vehicles for carrying dangerous loads (obligatory for groups N and O) Signs include: EX/II, EX/III, AT, FL. ME, MU | - Specifying the class of carrying dangerous commodities - presence of the sign of carrying dangerous commodities (if the vehicle has a certificate from the institute to carry dangerous loads) | | <i>ISIRI 6741</i> | Conformity <input type="checkbox"/> Non-conformity <input type="checkbox"/> No-use <input type="checkbox"/> | |
| 43 | General structure of buses (passenger vehicle) (obligatory for groups M2, M3) | Presence of vehicle capacity signs Number of doors Number of exits Emergency windows Presence of hammer beside the emergency window Distance between the two adjacent seats (specify the distance) Signing for emergency exit Presence of firefighting capsules | ----- | <i>ISIRI4160</i> | Conformity <input type="checkbox"/> Non-conformity <input type="checkbox"/> No-use <input type="checkbox"/> | |
| 44 | Electric vehicles (obligatory for groups M and N) | Protection against electric shocks Protection against eye-contact In RESS mode which has | | <i>INSO 21471</i> | <input type="checkbox"/> <input type="checkbox"/> <input type="checkbox"/> | |

Institute of Standards and Industrial Research of Iran

| | | | | | | |
|--|--|---|--|--|--|--|
| | | <p>high-voltage ability,  should be inserted near the RESS. The background of this signs must be in yellow and arrow should be in black. The sign should be observable on the vessels and when the vessels are removed, the sign also should be visible when seeing high-voltage cables. Regarding any high-voltage connection switch, this is optional. This condition shall not be used for the following cases:</p> <ul style="list-style-type: none"> a. When the barriers or vessels are not accessible, openable or closeable manually. b. when the barriers or vessels are located beneath the floor of the vehicle. <p>- high-voltage cables not located in the vessel should be specified with an orange coating</p> | | | | |
|--|--|---|--|--|--|--|

| Equipment used in inspection | |
|-------------------------------------|---------------|
| Name of equipment: | Equipment ID: |
| Name of equipment: | Equipment ID: |
| Name of equipment: | Equipment ID: |
| ----- | ----- |

Description of the final result of inspection:

According to the inspections of the vehicle with the above-mentioned specifications, all the physical requirements of mandatory standards were examined as above and the vehicle **is /is not** approved.

Agent (name, date, signature):

Manager of Test and Inspection (name, date, signature):

Appendix 6

FR.06

Self-Declaration form of manufacturing company (parent company) regarding the lack of changes in the technical and physical specifications of the vehicles

.... Company, the manufacturer of Vehicle, Type, Variant, Version..... pledge the Vehicle Model mentioned in the following table have not changed in terms of physical specifications, technical specifications, engine, and gearbox in comparison to the vehicles model of the year ... that have succeeded to receive the Type Approval Verification certificate from the Institute of Standards and Industrial Research of Iran (ISIRI). So only the 10th character of the vehicle identification number has changed from to.....

| VEHICLE NAME | TYPE, VARIANT, VERSION | VIN (11 Characters) |
|---------------------|-----------------------------------|--------------------------------|
| | | |

Managing Director

Signature

Institute of Standards and Industrial Research of Iran

Appendix 7

FR.07

Vehicle Conformity Certificate

Dear general director of import and export commodities quality assessment bureau- Institute of Standards and Industrial Research of Iran

Greetings,

It is hereby certified that:

The documents of imported vehicle (CBU) trade name with the specifications set forth in the table below is approved in terms of conformity with the mandatory standards of type-approval announced by the Institute of Standards and Industrial Research of Iran. The COC and the inspection report forms based on the mandatory standards of type-approval, the originality certificates of e/marks and the compact disk including the physical inspection checklists, the physical inspection images, the technical specifications form of the vehicle, decoding of the first 11 digits of the VIN, sample energy consumption label based on national standard no., inquiry letter from ministry of industry, mines and trade, agency’s activity license and all the related correspondences are presented.

| | |
|--|--|
| Make-Trade name of manufacturer: | Manufacturing country/ Assembling country: |
| Importer: | Type of fuel: |
| Category: | Type: |
| Variant: | Version: |
| Engine volume: | Engine type: |
| Whole vehicle approval number: | |
| Explanation: in case of issuing type-approval based on Separate documents, the related table will be attached. | |

The accuracy and originality of received e-marks and the conformity of the inspected vehicle with the related documents and standards are verified.

CEO

Appendix 8

Declaration of Conformity

Dear manager pf inspection company

Greetings,

The documents of vehicle type varietymodel (year) under brand name manufactured by(company name)..... manufactured/assembled by(name of country)....., signed and sealed by this company, are presented for inspection and issuance of COC with mandatory standards for vehicles, please send the results to import and export commodities quality assessment bureau of Institute of Standards and Industrial Research of Iran.

1. a. Presenting whole vehicle type approval based on the latest revision of European standard EC/2007/46

(in addition to WVTA, the type approval certificates (E/e-MARK) mounting lights and mounting tires shall also be provided).

b. Presenting the E/e-MARK certificates of type approval based on mandatory standards as separate form based on 85-item standards (according to requirements of standard 6924).

2. Technical specifications form

3. Vehicle's fuel consumption table and CO2 emission rate

4. Certificate of originality E-Marks

5. Copy of the letter of the vehicle industries and propulsion office of the ministry of industry, mines and trade attached to the authorized activity license of the foreign representative company

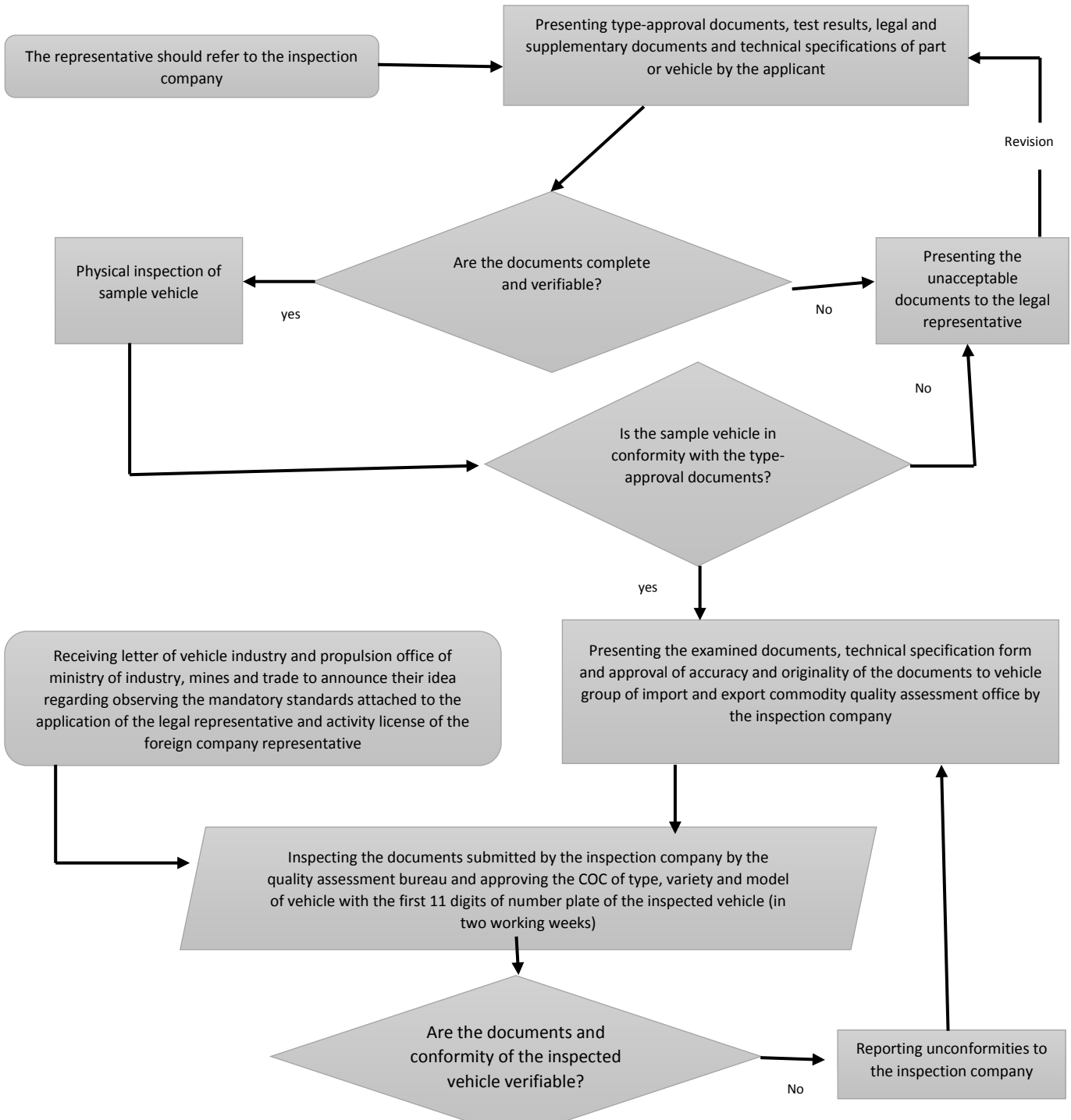
Hereby, this company, while accepting the responsibility of accuracy and originality of all the documents, declares that we will compensate for any possible direct or indirect damages due to inaccuracy or ambiguity or falsehood of the documents to any natural or legal entity and this company accepts all the civil and retributive and legal responsibilities and will be liable for all the damages.

CEO:

Company:

Appendix 9

Process flow of issuing type approval ratification certificate for vehicles



Process flow of issuing type approval ratification certificate for vehicles

